

The San Ysidro

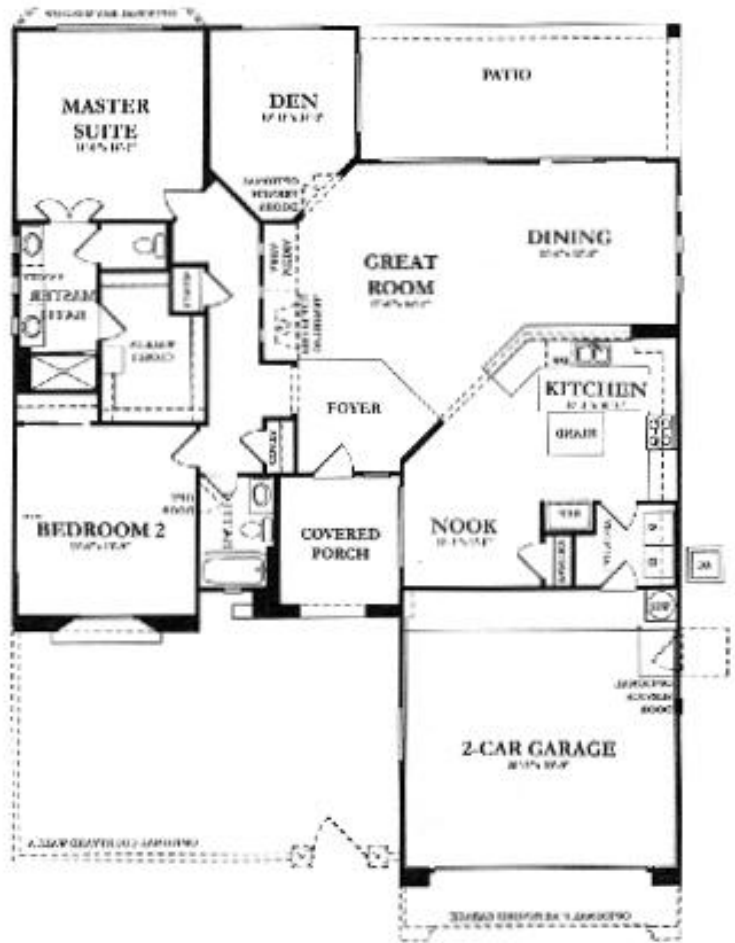
GREAT ROOM, BREAKFAST NOOK, 2 BEDROOMS, DEN, 2 BATHS,
 2-CAR GARAGE, COVERED PATIO
 LIVABLE AREA: 1,811 SQUARE FEET



OPTIONAL FULL HEIGHT
 OR 4' COURTYARD WALL
 WITH GUEST CASITA



OPTIONAL 4' HIGH
 COURTYARD WALL WITH GATE



ELEVATION B



ELEVATION A



ELEVATION C