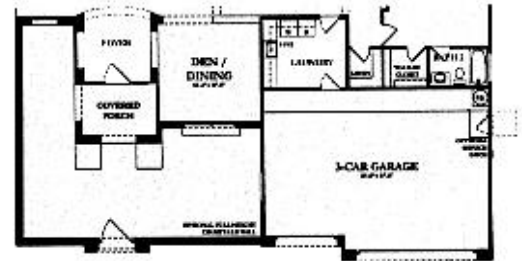
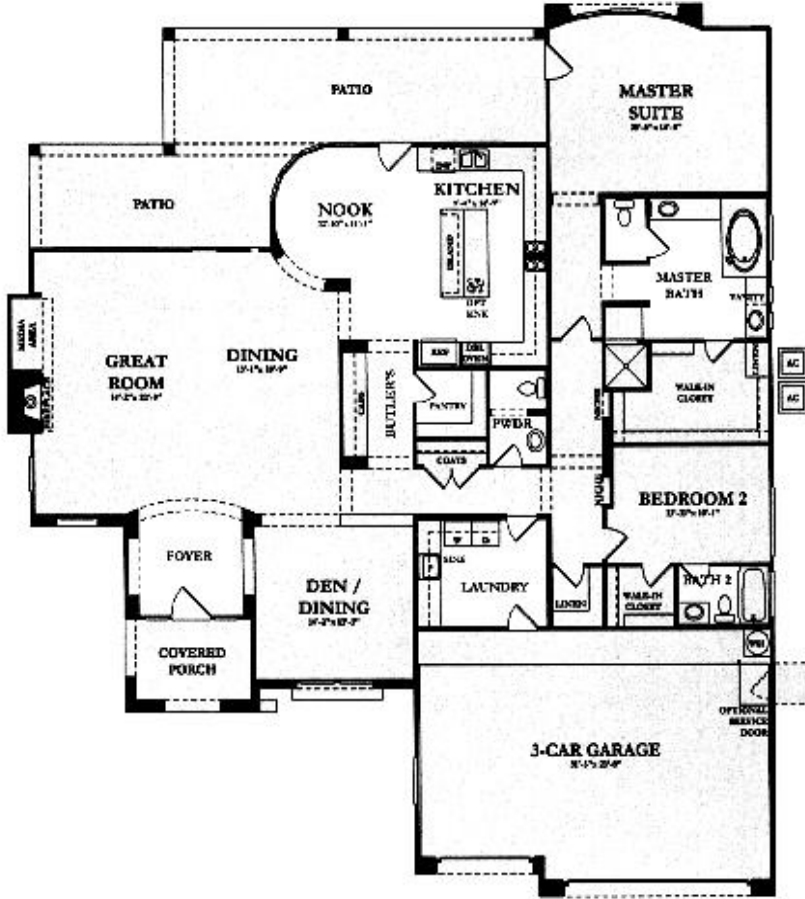
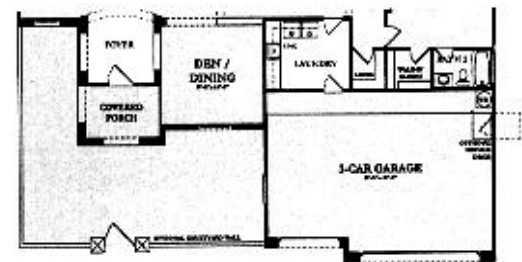


The Figueroa

GREAT ROOM WITH FIREPLACE, BREAKFAST NOOK,
 2 BEDROOMS, DEN, 2.5 BATHS, 3-CAR GARAGE, COVERED PATIO
 LIVABLE AREA: 2,785 SQUARE FEET



OPTIONAL FULL HEIGHT
 COURTYARD WALL WITH DOOR



OPTIONAL 4' HIGH COURTYARD
 WALL WITH GATE



ELEVATION A



ELEVATION B



ELEVATION C