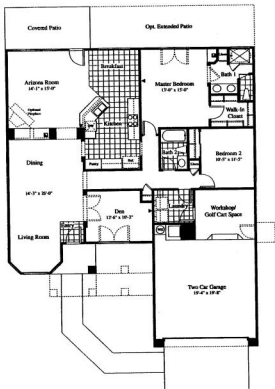


# WESTWARD HO

## PLAN 9132

1,728 Sq. Ft.

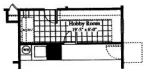


## HIGHLIGHTS

- ▶ LARGE KITCHEN OPEN TO ARIZONA ROOM
- ▶ GREAT MASTER BEDROOM
- ▶ SEPARATE LIVING & DINING AREA
- ▶ BAY WINDOW IN LIVING ROOM
- ▶ GOLF CART OR WORKSHOP AREA



Optional Bedroom 3



Optional Hobby Room

## OPTIONS

- ▶ THIRD BEDROOM
- ▶ HOBBY ROOM
- ▶ FIREPLACE
- ▶ EXTENDED PATIO
- ▶ EXTENDED COVERED PATIO
- ▶ EXTENDED GARAGE

# Continental

Welcome Home

This floor plan and its exterior design are an artist rendering. Location, size, distance to close, windows, walls, fireplace, material areas and any other item depicted may vary depending on exterior conditions or choice of options. Prices, plans, features and materials are subject to change without notice. All measurements are approximate.



a D. R. Horton Company  
1901 Ascension Blvd.