

# WESTWARD HO

## PLAN 9132

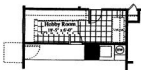
1,728 Sq. Ft.

### HIGHLIGHTS

- ▶ LARGE KITCHEN OPEN TO ARIZONA ROOM
- ▶ GREAT MASTER BEDROOM
- ▶ SEPARATE LIVING & DINING AREA
- ▶ BAY WINDOW IN LIVING ROOM
- ▶ GOLF CART OR WORKSHOP AREA



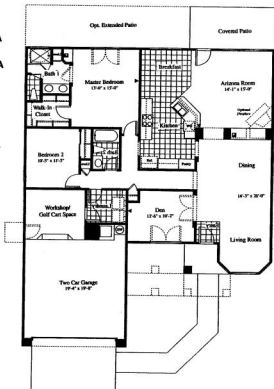
Optional Bedroom 3



Optional Hobby Room

### OPTIONS

- ▶ THIRD BEDROOM
- ▶ HOBBY ROOM
- ▶ FIREPLACE
- ▶ EXTENDED PATIO
- ▶ EXTENDED COVERED PATIO
- ▶ EXTENDED GARAGE



This floor plan and its exterior design are an artist's rendering. Location, size, substance of doors, windows, walls, fireplace, vaulted areas and any other item depicted may vary depending on exterior preferences or choice of options. Prices, plans, features and materials are subject to change without notice. All measurements are approximate.

# Continental

Welcome Home



a D. R. Horton Company  
1901 Ascension Blvd.