

KENILWORTH

PLAN 9024

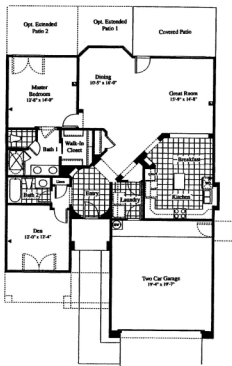
1,424 Sq. Ft.

HIGHLIGHTS

- ▶ LARGE KITCHEN WITH LOTS OF COUNTERS
- ▶ GREAT ROOM
- ▶ MIRRORED CLOSET DOOR IN MASTER BEDROOM
- ▶ "UNIQUE" ENTRY FOYER
- ▶ "SPLIT" FLOOR PLAN
- ▶ BAY WINDOW IN DINING AREA
- ▶ COVERED PATIO



Optional Bedroom 2



OPTIONS

- ▶ SECOND BEDROOM
- ▶ FIREPLACE W/ MEDIA
- ▶ EXTENDED PATIO
- ▶ EXTENDED COVERED PATIO
- ▶ EXTENDED GARAGE

Continental

Welcome Home

This floor plan and its exterior design are only artist renderings. Location, size, substance of items, materials, walls, fixtures, window areas and any other items depicted may vary depending on exterior preferences or status of options. Prices, plans, features and models are subject to change without notice. All measurements are approximate.



s D. R. Horton Company
1901 Ascension Blvd.